



# Newsletter

3rd July 2025, Term 2, Week 10



## PRINCIPAL'S MESSAGE

Dear Families and Community,

It has been a busy couple of weeks at Modbury South Primary. We've welcomed Ms Thomas into the Wellbeing Leader role and I have had the pleasure of stepping in as the Acting Principal. We've had Room 10's market, a number of classes have gone on excursions, SAPSASA competitions and lots of end of term celebrations.

It is safe to say we are all ready for the school holiday break. Whether you are staying home and getting some rest, going away or spending time with family and friends we wish you a safe and enjoyable break. We look forward to welcoming everyone back to Term 3 on Monday 21<sup>st</sup> July.

Kristen Angus

VOLUME 10

## Diary Dates

**Friday 4 July**  
Last day of Term 2  
Early dismissal at 2pm

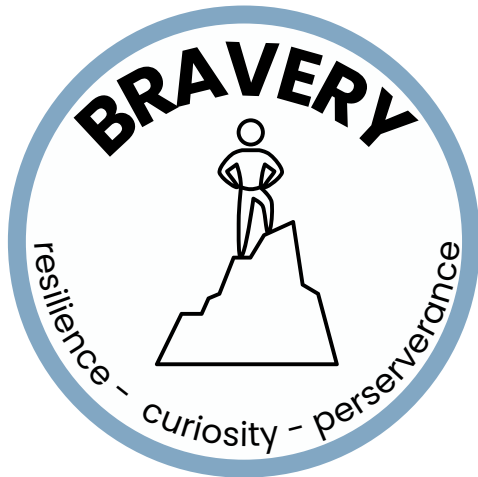
**Monday 21 July**  
First day of Term 3  
Welcome to our new  
Receptions and  
Preschoolers

**Tuesday 5 August**  
Governing Council  
Meeting at 7pm

**Wednesday 13 August**  
School Photo day

# OUR VALUES IN ACTION

This year we want to recognise students, staff and families who are demonstrating our school values and celebrate how this contributes to our school being a positive place to learn, grow and achieve.



The girls' team participated in the SAPSASA football competition, joining forces with students from Ardtornish to form a complete team. They showed great bravery by competing in five rounds and securing victory in three of them.



Students have demonstrated exceptional kindness in extending a warm welcome to pre-service teachers within their classrooms.



Well done to Brock, Jayden, AJ Braxton and Shazad for being great community members and packing up sporting equipment which was left on the oval.

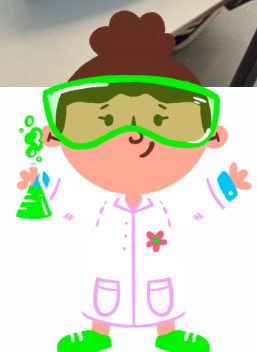
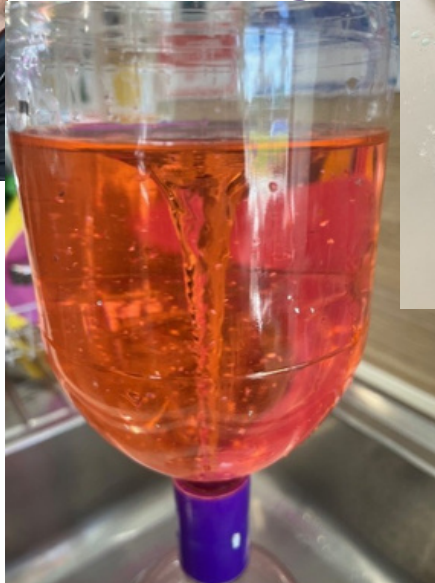
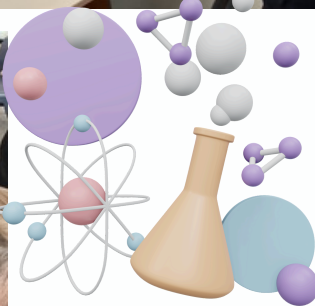


# SCIENCE

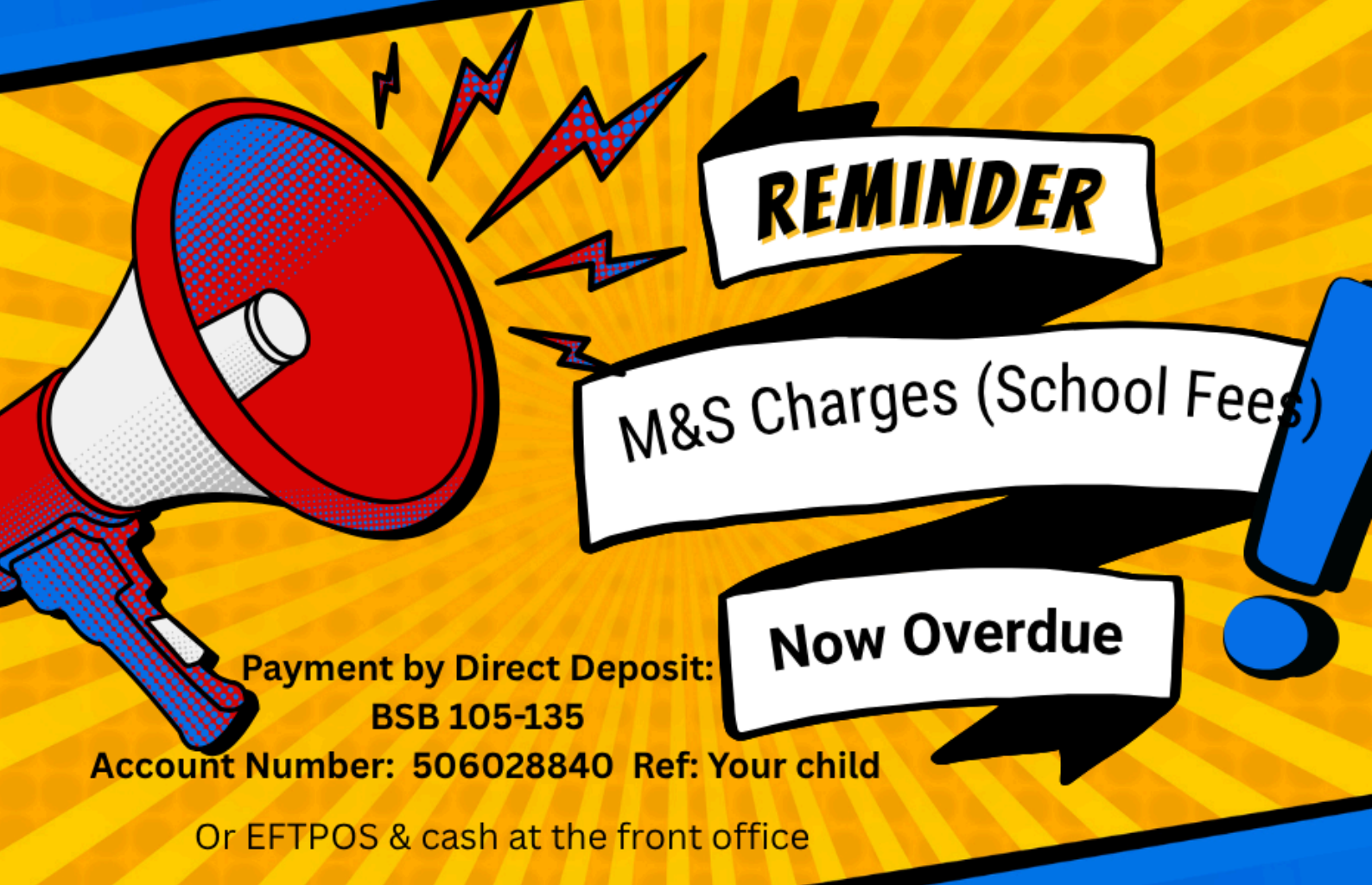
## WITH ROOM 13

This term in Science, students have been busy investigating the power of wind force through a range of exciting, hands-on activities. They designed and flew kites to observe how wind interacts with different shapes and materials. As part of a construction challenge, students built model houses and tested their strength using various wind sources, including fans, hair dryers, and even leaf blowers! The aim was to gather data and discover which designs were the most resilient.

In addition, students created mini tornadoes using recycled soft drink bottles and explored wind-related phenomena through sensory play. It's been a fun-filled and engaging term, with plenty of opportunities for curiosity, creativity, and collaboration.







If you have not received an Account Statement please contact the front office on 8264 3527 or let us know via email at [dl.1047.info@schools.sa.edu.au](mailto:dl.1047.info@schools.sa.edu.au)

Before you pay your account, please check if you are eligible for School Card at :

<https://www.sa.gov.au/topics/education-and-learning/financial-help-scholarships-and-grants/school-card-scheme>

Preschool fees of \$65.00 are charged each term. If your fees are overdue, please pay these immediately . Direct deposit details above.

**THE PRESCHOOL  
PARENT SURVEY**



SUBMIT

Reminder that the Preschool Parent Survey is now available and will be closing on the 11 th July 2025.